

# Habitats Regulations Assessment



## Kimbolton Neighbourhood Area

March 2017

# **Kimbolton HRA**

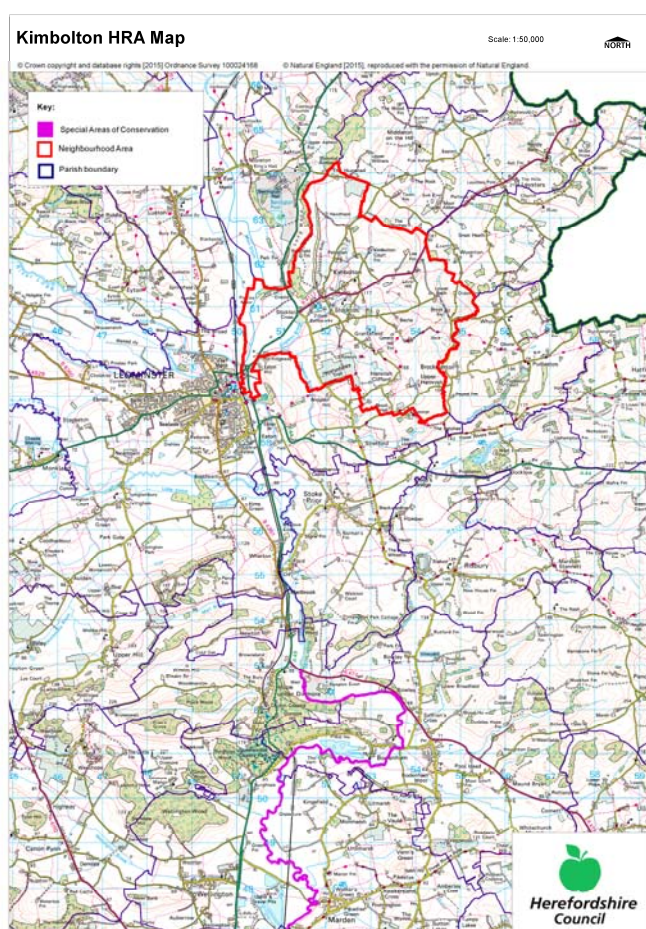
## **HRA Screening Assessment**

### **Contents**

- 1 Introduction**  
Map of the Neighbourhood Area with European sites shown
  - 2 The requirement to undertake Habitats Regulations Assessment of Neighbourhood Plans**
  - 3 Methodology**
  - 4 Results of the Initial Screening Report and options**
  - 5 Description of the Kimbolton Neighbourhood Plan**
  - 6 Identification of other plans and projects which may have ‘in-combination’ effects**
  - 7 Assessment of the ‘likely significant effects’ of the Kimbolton NDP**  
Table 1 - Colour coding key for Matrix
  - 8 Conclusions from the Screening Matrix**
- 
- Appendix 1** – List of options assessed
- Appendix 2** – Options Assessment and Full Screening matrix
- Appendix 3** – Initial Screening Report (July 2015)

## 1 Introduction

- 1.1 This Screening Assessment relates to a Neighbourhood Development Plan that is considered to be in general conformity with higher level strategic plans, such as the Herefordshire Core Strategy and the National planning Policy Framework. The screening stage involves assessing broadly whether the Draft Neighbourhood Plan is likely to have a significant effect on any European site(s).
- 1.2 Kimbolton Parish Council is producing a Neighbourhood Development Plan for Kimbolton Parish, in order to set out the vision, objectives and policies for the development of the Parish up to 2031. This HRA reviews the Draft Kimbolton Plan March 2017.
- 1.3 The NDP is criteria based as well as allocating settlement boundaries and housing sites. It provides general policies that clarify and provide detail to the policies within the Herefordshire Core Strategy therefore it requires a high level screening assessment to build upon the HRA Screening Assessment Report for the Herefordshire Core Strategy. This high level screening assessment should be read in combination with the Herefordshire Pre-submission publication of the Local Plan-Core Strategy Habitat Regulations Assessment Report (July 2015) and ensures that there will not be any significant impacts upon Natura 2000 sites.
- 1.4 The map below shows Kimbolton Neighbourhood Area with the European Site highlighted.



## 2 The requirement to undertake Habitats Regulations Assessment of neighbourhood plans

- 2.1 The requirement to undertake HRA of development plans was confirmed by the amendments to the "Habitats Regulations" published for England and Wales in July 2007 and updated in 2013. Therefore, when preparing its NDP, Kimbolton Parish Council is required by law to carry out an assessment known as "Habitats Regulations Assessment". It is also a requirement in Regulation 32 schedule 2 of the Neighbourhood Planning Regulations 2012.
- 2.2 Article 6(3) of the EU Habitats Directive provides that:  
*Any plan or project not directly connected with or necessary to the management of the [European] site but likely to have a significant effect thereon, either individually or in combination with other plans or projects, shall be subject to appropriate assessment of its implications for the site in view of the site's conservation objectives. In the light of the conclusions of the assessment of the implications for the site and subject to the provisions of paragraph 4, the competent national authorities shall agree to the plan or project only after having ascertained that it will not adversely affect the integrity of the site concerned and, if appropriate, after having obtained the opinion of the general public.*
- 2.3 HRA is an impact-led assessment and refers to the assessment of the potential effects of a neighbourhood plan on one or more European sites, including Special Protection Areas (SPAs) and Special Areas of Conservation (SACs):
- **SPAs** are classified under the European Council Directive 'on the conservation of wild birds' (79/409/EEC; 'Birds Directive') for the protection of **wild birds and their habitats** (including particularly rare and vulnerable species listed in Annex 1 of the Birds Directive, and migratory species).
  - **SACs** are designated under the Habitats Directive and target **particular habitats** (Annex 1) and/or species (Annex II) identified as being of European importance.
- 2.4 For ease of reference during HRA, general practice has been that these three designations are collectively referred to as either **Natura 2000** or **European sites**. This means that a Screening Assessment is carried out with regard to the Conservation Objectives of the European Sites and with reference to other plans or projects to identify if any significant effect is likely for any European Site.

## 3 Methodology

- 3.1 As the Kimbolton NDP is not directly connected with the management of any European sites, and includes proposals for development which may affect European sites, it is necessary under Regulation 102(1)(a) of the Habitats Regulations 2010 to undertake screening for likely significant effects on European sites.
- 3.2 The HRA of neighbourhood plans is undertaken in stages and should conclude whether or not a proposal or policy in a neighbourhood plan would adversely affect the integrity of the site in question. This is judged in terms of the implications of the plan for a site's 'qualifying features' (i.e. those Annex I habitats, Annex II species, and Annex I bird populations for which it has been designated) and are measured with reference to the conservation objectives for those qualifying features as defined by Natural England.
- 3.3 The first process is to undertake an initial screening report to determine the need to undertake the requirement for a HRA, this initial screening identifies whether the Plan could impact upon any European site that could be within the Neighbourhood Area or nearby.

- 3.4 If a European Site is within the Neighbourhood Area or the Neighbourhood Area could impact upon a European site then this will need to be taken into account and a full screening assessment will need to be undertaken.
- 3.5 The full screening stage consists of a description of the plan, identification of potential effects on European Sites, assessing the effects on European Sites (taking into account potential mitigation provided by other policies in the plan). For Neighbourhood Plans the outcome should demonstrate there are no likely effects upon the European sites. If any likely effects occur then there will need to be amendments to the NDP made and be re-screened until all likely effects have been mitigated.

#### **4 Results of the Initial Screening Report and options**

- 4.1 The initial Screening report (July 2015) found that the River Lugg part of the River Wye SAC is located within the group parish of Kimbolton therefore a full screening assessment is required.
- 4.2 For full details of the River Wye's attributes which contribute to and define their integrity and vulnerable data see Appendix 1 of the Kimbolton Initial Screening Report. The Initial Screening Report, July 2015, can be found in Appendix 3 of this HRA report. This information made it possible to identify the features of each site which determine site integrity, as well as the specific sensitivities of each site, therefore enabling later analysis of how the potential impacts of the Kimbolton Neighbourhood Plan may affect site integrity.
- 4.3 The initial options for the NDP were assessed to determine their environmental impact that could affect the River Wye (including the River Lugg) SAC. Of the nine options put forward the no NDP option was not considered viable for the Parish, therefore the first option of undertaking a NDP was taken forward and a steering group was set up in 2015. The parish proposed three options proposed growth most would be within the proportional growth targets of the Core strategy and are therefore unlikely to have a significant impact on the SACs.
- 4.4 As Kimbolton progresses from options onto their NDP policies, the Plan will need to identify ways in which the least effect on the River Wye SAC could be achieved, alongside taking forward the preferred option from the consultation from the community. A list of the options assessed can be found in Appendix 1, and the Assessment matrix for the options can be found Appendix 2.

#### **5 Description of the Kimbolton Neighbourhood Development Plan**

- 5.1 The Draft Kimbolton NDP presents detailed policies for development in the Neighbourhood Area, which is equivalent to the group parish boundary, up to 2031. The first part of the Plan introduces the Plan and its preparation and discusses the background of the village.
- 5.2 The NDP then details the vision for the Group Parish over the Plan period and nine objectives of how this will be achieved. The objectives cover the following topics:
- Design, Natural and built environment
  - Housing
  - Traffic and Highways
  - Employment
  - Community facilities and infrastructure
  - Protection of natural and built environment

5.3 The NDP also sets out 22 policies on various topics based on the objective headings above and also for the village, these include:

- Policy K1- Promoting a Sustainable Community
- Policy K2-Development Strategy
- Policy K3-The scale of new housing
- Policy K4- Housing development within the settlement boundary
- Policy K5- Housing in the countryside
- Policy K6- Extensions to dwellings
- Policy K7- Design of new housing
- Policy K8- Ensuring an appropriate range of tenures, types and sizes of houses
- Policy K9-Affordable Housing
- Policy K10- Protecting and enhancing local character
- Policy K11-Local Heritage List
- Policy K12-Controlling light pollution
- Policy K13-Broadband
- Policy K14-Renewable Energy
- Policy K15-Traffic management and road safety improvements
- Policy K16-Transport and connectivity
- Policy K17-Business development
- Policy K18-Protection of existing business premises
- Policy K19-Agriculture and forestry enterprises
- Policy K20-Enhanced Services and facilities for the community
- Policy K21-Protection and enhancement of community facilities
- Policy K22-Open Space and Play Areas

## **6 Identification of other plans and projects which may have ‘in-combination’ effects**

- 6.1 Regulation 102 of the Habitats Regulations 2010 requires an appropriate assessment where a land use plan (not directly connected with or necessary to the management of the site) is likely to have a significant effect on a European site, either alone or in combination with other plans or projects. In addition, in accordance with the Neighbourhood Planning Regulation 2012 a NDP cannot have a significant effect on any European Site whether alone or in combination with another Plan.
- 6.2 There are a number of potentially relevant plans and projects which may result in in-combination effects with the Core Strategy across Herefordshire, these plans have been reviewed and can be found in Appendix 2 of the pre-submission publication of the Herefordshire Local Plan – Core Strategy Habitats Regulations Assessment (May 2014). It is seen that as this NDP does not go over and beyond the requirements set out in the Core Strategy this review will also be substantial for the NDP.
- 6.3 The HRA for the Core Strategy also identifies that both the Water Cycle Study for Herefordshire, which indicates the potential for planned water abstraction requirements combined with pressures on European Sites from the Core Strategy

policies, and the work on the Nutrient Management Plan, to ensure the favourable conservation status of the SAC in respect of phosphate levels as soon as possible and at the latest by 2027, have both been considered as part of the in-combination assessment.

## 7 Assessment of the 'likely significant effects' of the Kimbolton NDP

- 7.1 As required under Regulation 102 of the Habitats Regulations 2010, a screening assessment has been undertaken to identify the 'likely significant effects' of the NDP. A screening matrix was prepared in order to identify whether any of the policies in the Plan would be likely to have a significant effect on the River Wye (including the River Lugg) SAC.
- 7.2 The findings of the screening matrix can be found in the Screening Matrix in Appendix 2 of this report. Colour coding was used to record the likely impacts of the policies on the European site and its qualifying habitats and species as shown in the table 1 below.

Red	There are likely to be significant effects
Green	Significant effects are unlikely

- 7.3 The Screening matrix took the approach of screening each policy individually, which is consistent with current guidance documents. The results from the HRA report for the pre-submission version of the Herefordshire Core Strategy was also taking into consideration.
- 7.4 Mitigation of some of the identified potential effects could be achieved through implementation of the other policies within the NDP which require good practice measures during and after construction phases, such as more efficient use of water, reduction in waste and encouragement of recycling. The provision and encouragement of use of more sustainable transport measures when improving the transport infrastructure, will also help to increase road safety and reduce car traffic around the parish and surrounding areas.

## 8 Conclusions from the Screening Matrix

- 8.1 None of the Draft Kimbolton NDP (March 2017) policies are likely to have a significant effect on the River Wye SAC. Based on assumptions and information contained within the Kimbolton NDP, Herefordshire Core Strategy and adopted version / proposed modifications addendum of the HRA for the Core Strategy all of the NDP policies were found to be unlikely to result in significant effects on the River Wye SAC.
- 8.2 In many cases this is because the policy itself would not result in development, i.e., it related instead to criteria for development or because it was down to the small scale and location of the proposed development. In a number of cases the policies also included measures to help support the natural environment, including biodiversity and therefore no significant effect conclusion could be reached. In addition, these policies have the potential to mitigate some of the possible adverse effects arising from other policies.
- 8.3 The plan is allocates a settlement boundary for Kimbolton village, and does not allocate any sites for development but proposes development within the settlement boundary and relies mainly from windfall housing. None of which have thought to have an impact on the River Wye SAC, from HRA screening.
- 8.4 In addition, the preparation of the Nutrient Management Plan for the River Wye SAC should ensure that development within Herefordshire which can be accommodated

within existing water discharge permits would not be likely to have a significant effect upon the River Wye SAC.

- 8.5 It is unlikely that the Kimbolton NDP will have any in-combination effects with any Plans from neighbouring parish councils as the level of growth proposed is the same as that proposed for the Housing Market Area in the Herefordshire Core Strategy and all of the proposed housing sites will be of a small scale.
- 8.6 It is therefore concluded that the Kimbolton NDP will not have a likely significant effect on the River Wye SAC.
- 8.7 Any further amendments to policies (post March 2017) will be rescreened if required and an addendum to this report will be produced.

# Appendix 1

### **Kimbolton Options**

<u>Option 1</u> – Restricted growth-Focus on rural areas
<u>Option 2</u> - Continue Kimbolton as the main focus for growth
<u>Option 3</u> -Small scale infill growth in Kimbolton
<u>Option 4</u> - to do nothing
<u>Option 5</u> -To define a new settlement boundary allowing for some limited new development
<u>Option 6</u> - To allocate specific sites within the new boundary to direct development to preferred locations.
<u>Option 7</u> - To dispense with a boundary and not identify specific sites but to rely on criteria based policies to control development guided by the comments received on preferred sites.
<u>Option 8</u> -To create a new settlement boundary and allocate sites within it
<u>Option 9</u> - To control development through criteria based policies

# Appendix 2

**Table 1: HRA Screening of Emerging Neighbourhood Development Plan Options, Objectives and Policies**

Parish Council Name: Kimbolton Parish Council

NDP Title: Kimbolton Group NDP

Date undertaken: March 2017

NDP objectives, options policies	HRA Screening of Emerging NDP objectives, options and policies				
	Likely activities (operations) to result as a consequence of the objective/option/policy	Likely effect if objective/option/policy implemented. Could they have Likely significant Effects (LSE) on European Sites? (Yes/No, with reasons)	European Sites potentially affected  (Refer to Initial Screening)	Mitigation measures to be considered, as necessary, through redraft of objective/option/policy and to be considered as part of Appropriate Assessment	Could the policy have likely significant effects on European sites (taking mitigation into account?)
<b>Options</b>					
<u>Option 1</u> – restricted growth- Focus on rural areas	Development will be restricted conversion of existing buildings.	Criteria policies within the Core Strategy would guide further development. Specific policies and proposals for the parish would not exist.	River Wye SAC including River Lugg	Policy criteria should be included within the NDP which reflects this. Further assessments will be undertaken at draft policy stage.	No, this option acknowledges sustainable scale growth within in line with Core Strategy policy. Safeguard policies exist within the plan.
<u>Option 2</u> - Continue Kimbolton as the main focus for growth	Majority of development to be in Kimbolton, along with larger sites with 10 or more dwellings.  Growth at the edge of village.	Criteria policies within the Core Strategy would guide further development. Specific policies and proposals for the parish would not exist.	River Wye SAC including River Lugg	Policy criteria should be included within the NDP which reflects this. Further assessments will be undertaken at draft policy stage.	No, this option acknowledges sustainable scale growth within in line with Core Strategy policy. Safeguard policies exist within the plan.
<u>Option 3</u> -	Limited infill growth on sites less	Criteria policies within the	River Wye SAC	Policy criteria should be	No, this option

This document is copyright of Herefordshire Council, please contact the Neighbourhood Planning team if you wish to reuse it in whole or part.

Small scale infill growth in Kimbolton	than 5 dwellings with additional homes via conversion of rural buildings in the countryside.	Core Strategy would guide further development. Specific policies and proposals for the parish would not exist.	including River Lugg	included within the NDP which reflects this. Further assessments will be undertaken at draft policy stage.	acknowledges sustainable scale growth within in line with Core Strategy policy. Safeguard policies exist within the plan.
<u>Option 4</u> - to do nothing	No NDP to determine planning applications.	Criteria policies within the Core Strategy would guide further development. Specific policies and proposals for the parish would not exist.	River Wye SAC including River Lugg	N/A	N/A
<u>Option 5</u> -To define a new settlement boundary allowing for some limited new development	Housing development within the defined boundary  Increase in water usage  Increase in traffic	Unlikely that there will be any significant effects on the European Site.	River Wye SAC including River Lugg	Policy criteria should be included within the NDP which reflects this. Further assessments will be undertaken at draft policy stage.	No, this option acknowledges sustainable scale growth within defined settlement boundaries in line with Core Strategy policy. Safeguard policies exist within the plan.
<u>Option 6</u> - To allocate specific sites within the new boundary to direct development to preferred locations.	New housing will be developed in settlement boundary. Increase demand in transportation. Increase demand in water abstraction and waste production. New houses developed.  Greater development certainty.	Unlikely that there will be any significant effects on the European Site.  Greater degree of certainty over the impact of future development on the European sites, as the location of housing would be pre-determined and not left to market forces.	River Wye SAC including River Lugg	Policy criteria should be included within the NDP which reflects this. Further assessments will be undertaken at draft policy stage.	No, this option acknowledges sustainable scale growth within defined settlement boundaries in line with Core Strategy policy. Safeguard policies exist within the plan.
<u>Option 7</u> - To	New housing will be developed in	Unlikely that there will be	River Wye SAC	Additional criteria would	No, development in line

This document is copyright of Herefordshire Council, please contact the Neighbourhood Planning team if you wish to reuse it in whole or part.

dispense with a boundary and not identify specific sites but to rely on criteria based policies to control development guided by the comments received on preferred sites.	settlement boundary. Increase demand in transportation. Increase demand in water abstraction and waste production	any significant effects on the European Site.  Greater degree of certainty over the impact of future development on the European sites, as the location of housing would be pre-determined and not left to market forces.	including River Lugg	be required when formulating the accompanying settlement boundary policy to ensure that no likely significant effects could occur.	with the Local Plan (Core Strategy) and the policy safeguards which exist within the Core Strategy should avoid or mitigate any likely significant effects.
<u>Option 8</u> -To create a new settlement boundary and allocate sites within it	New housing will be developed in settlement boundary. Increase demand in transportation. Increase demand in water abstraction and waste production	Unlikely that there will be any significant effects on the European Site.  Greater degree of certainty over the impact of future development on the European sites, as the location of housing would be pre-determined and not left to market forces.	River Wye SAC including River Lugg	Additional criteria would be required when formulating the accompanying settlement boundary policy to ensure that no likely significant effects could occur.	No, development in line with the Local Plan (Core Strategy) and the policy safeguards which exist within the Core Strategy should avoid or mitigate any likely significant effects.
<u>Option 9</u> - To control development through criteria	Housing development  Increase in transport and facility use  Increase in water and sewage	Less certain in comparison to allocating sites and settlement boundary, as to the impact on the European	River Wye SAC including River Lugg	Specific environmental issues could be investigated during the site search and be positively addressed	No, development in line with the Local Plan (Core Strategy) and the policy safeguards which exist within the Core

This document is copyright of Herefordshire Council, please contact the Neighbourhood Planning team if you wish to reuse it in whole or part.

based policies	<p>waste production and water consumption</p> <p>Small scale proportionate growth where the location would be determined by a criteria based policy.</p>	sites as dependant on the location of the development.		<p>within the policy wording.</p> <p>Policy would need to take account of the proportional growth requirements of the Core Strategy and potential headroom capacity at the local STW.</p>	<p>Strategy should avoid or mitigate any likely significant effects.</p> <p>Policy criteria should be included within the NDP which reflects this. Further assessments will be undertaken at draft policy stage.</p>
<b>Objectives</b>					
K1	<p>Sustainable housing development within Kimbolton.</p> <p>Proportional growth in line with Policy RA2 of the Local Plan (Core Strategy).</p>	If objective is realised then the policies that deliver it could have a positive impact upon European sites.	River Wye (including the River Lugg) SAC	There are additional policies in place within the Core strategy to ensure that schemes are not of a disproportionate scale.	No, the policies involved in delivering this objective would only have positive impacts upon the European sites if they are successfully implemented.
K2	Support and safeguard existing community facilities	No likely significant effect on the River Wye (including River Lugg) SAC.	River Wye (including the River Lugg) SAC	There are additional policies in place within the Core strategy to ensure that schemes are not of a disproportionate scale.	No, the policies arising from this objective will seek to reduce the carbon footprint which will also help with air quality.
K3	Promoting measures to ensure the historic, farmsteads and landscape of the Parish remains or is enhanced.	If objective is realised then the policies that deliver it could have a positive impact upon European sites.	River Wye (including the River Lugg) SAC	N/A	No, the policies involved in delivering this objective would only have positive impacts upon the European sites if they are successfully implemented.

This document is copyright of Herefordshire Council, please contact the Neighbourhood Planning team if you wish to reuse it in whole or part.

K4	Promotion of employment and local business within the parish.  Business development and encourage existing businesses to remain in the parish	There is enough emphasis within the related policies on limiting pollution from business activity/attracting non-polluting activity to avoid adverse impacts on the European sites.	River Wye (including the River Lugg) SAC	N/A	No as the level of development is likely to only be small scale. Policies within the Core Strategy and NDP which will help to mitigate any potential detrimental impact caused from development.
K5	Improve existing infrastructure, encouraging safer places to travel in.	No likely significant effect on the River Wye (including River Lugg) SAC.	River Wye (including the River Lugg) SAC	N/A	No as the level of development is likely to only be small scale and should help with the overall aim of improving road safety, reducing traffic and thereby improving air pollution
K6	Promote measures to slow traffic down through the village and improve highway safety and pedestrian access	No likely significant effect on the River Wye (including River Lugg) SAC.	River Wye (including the River Lugg) SAC	N/A	No, as the level of development is likely to only be small scale and should help with the overall aim of reducing traffic, increasing walking/ cycling and thereby improving air pollution
K7	Protects and enhances character of parish, safeguarding biodiversity, hedgerows, archaeology, traditional buildings and views.	No likely significant effect on the River Wye (including River Lugg) SAC.	River Wye (including the River Lugg) SAC	N/A	No, the objective involved in delivering this objective would only have positive impacts upon the European sites if they are successfully implemented.

This document is copyright of Herefordshire Council, please contact the Neighbourhood Planning team if you wish to reuse it in whole or part.

K8	Support for high speed internet throughout the parish.  Support for mobile phone infrastructure.	No likely significant effect on the River Wye (including River Lugg) SAC.	River Wye (including the River Lugg) SAC	N/A	No as the level of development is likely to only be small scale. Policies within the Core Strategy and NDP which will help to mitigate any potential detrimental impact caused from development.
K9	Support community facilities and spirit of community based projects.	No likely significant effect on the River Wye (including River Lugg) SAC.	River Wye (including the River Lugg) SAC	N/A	No. This objective will not seek to provide development but more to enhance the facilities that are currently in existence.
<b>Policies</b>					
<b>Policy K1</b>	Encourages sustainable development and communities  Proportional growth in line with Policy RA2 of the Local Plan (Core Strategy).	No likely significant effect on the River Wye (including River Lugg) SAC.	River Wye (including the River Lugg) SAC	N/A	No. The policy would itself not lead to development; instead it relates to criteria for encouraging sustainable development and sustainable communities.
<b>Policy K2</b>	Proportionate growth on specific sites identified on a proposals map.  Housing development within	No likely significant effect on the River Wye (including River Lugg)	River Wye (including the River Lugg) SAC	None identified, majority of the policies within the NDP and Core Strategy will help to mitigate any	No. This policy remains within the requirements set out in the Core Strategy RA2 policy

This document is copyright of Herefordshire Council, please contact the Neighbourhood Planning team if you wish to reuse it in whole or part.

	<p>settlement boundary of Kimbolton.</p> <p>Small increase in vehicle traffic and increase in demand for water supply and water abstraction.</p> <p>Nonphysical disturbance, such as noise pollution in the short and medium term.</p>	SAC.		adverse effects.	and therefore is not over and above the proposed. Although it is acknowledged that there will be an increase in the demand for water abstraction and sewage treatment the Core Strategy has identified that there is sufficient headroom and capacity for the additional houses over the plan period.
<b>Policy K3</b>	<p>Promotion of proportionate growth in accordance with RA2. Development will be in a defined settlement boundary area as well as windfall.</p> <p>Housing Development</p> <p>Increased in vehicle traffic</p> <p>Small increase in water abstraction</p>	No likely significant effect on the River Wye (including River Lugg) SAC.	River Wye (including the River Lugg) SAC	<p>This policy will help to mitigate the potential effects of any future development by encouraging sustainable construction methods and protecting the existing landscape.</p> <p>Improved water efficiency measures, metering and addressing leakages in the supply may help to mitigate any additional pressures on the water supply as a result of new development.</p>	No. This policy remains within the requirements set out in the Core Strategy RA2 policy and therefore is not over and above the proposed. Although it is acknowledged that there will be an increase in the demand for water abstraction and sewage treatment the Core Strategy has identified that there is sufficient headroom and capacity for the additional houses over the plan period.
<b>Policy K4</b>	Small scale proportionate growth within a defined settlement boundary area. Of Kimbolton and Stockton, both now considered the	Due to scale and location of potential schemes it is unlikely to have a significant effect on the	River Wye (including the River Lugg) SAC	The measures set out in the Core Strategy policies and also the NDP policies should help to avoid adverse	No. This policy remains within the requirements set out in the Core Strategy RA2 policy and therefore is not

This document is copyright of Herefordshire Council, please contact the Neighbourhood Planning team if you wish to reuse it in whole or part.

	<p>settlement of Kimbolton.</p> <p>Small increase in vehicular traffic</p> <p>Small increase in water abstraction</p>	River Wye (including River Lugg) SAC.		<p>impacts upon the European site.</p> <p>Improved water efficiency measures, metering and addressing leakages in the supply may help to mitigate any additional pressures on the water supply as a result of new development.</p>	<p>over and above the proposed. Although it is acknowledged that there will be an increase in the demand for water abstraction and sewage treatment the Core Strategy has identified that there is sufficient headroom and capacity for the additional houses over the plan period.</p>
<b>Policy K5</b>	<p>Small scale proportionate growth within the countryside in accordance to policy RA3 and RA4.</p>	<p>Due to scale and location of potential schemes it is unlikely to have a significant effect on the River Wye (including River Lugg) SAC.</p>	River Wye (including the River Lugg) SAC	<p>The measures set out in the Core Strategy policies and also the NDP policies should help to avoid adverse impacts upon the European site.</p>	<p>This policy remains within the requirements set out in the Core Strategy RA3 and RA4 policy and therefore is not over and above the proposed.</p>
<b>Policy K6</b>	<p>Housing extension development</p> <p>Small construction disturbance</p>	<p>No likely significant effect on the River Wye (including River Lugg) SAC.</p>	N/A	<p>The measures set out in the Core Strategy policies and also the NDP policies should help to avoid adverse impacts upon the European site.</p>	<p>No. The scale and extent of house extensions is unlikely to have a significant impact on the SAC .. Mitigation measures are covered in policy LD2 and LD3 of the Core Strategy and policies within the</p>
<b>Policy K7</b>	<p>Promotion of high quality design development and design in keeping with villages existing character.</p>	<p>No likely significant effect on the River Wye (including River Lugg)</p>	N/A	<p>This policy should help to mitigate the potential impacts of other NDP policies in relation to</p>	<p>No. This policy will not lead to new development; rather it aims to ensure</p>

This document is copyright of Herefordshire Council, please contact the Neighbourhood Planning team if you wish to reuse it in whole or part.

	Promotion of sustainable design Promotion of minimising waste	SAC.		inappropriate design.	development is of a high standard and fitting with the existing townscape.
<b>Policy K8</b>	Promote a range and various types, sizes and tenures of houses	N/A	N/A	N/A	No. This policy will not lead to new development; rather it aims to ensure housing is diverse to meet the parish's identified needs.
<b>Policy K9</b>	Promotion of affordable housing to meet the needs of people within Kimbolton.	N/A	N/A	This policy should help to mitigate the potential impacts of other NDP policies in relation to increased traffic due to reducing the extent to which people need to travel for work.	No. This policy will not lead to new development; rather it specifically aims to promote affordable housing within the group parish to meet the needs of its people.
<b>Policy K10</b>	Safeguard existing landscape and townscape against inappropriate development.  Protect local habitats and wildlife corridors  Protect special views	N/A.	N/A	This policy should help to mitigate the potential impacts of other NDP policies in relation to impact on historic character of townscape and landscape.	No. This policy will not lead to new development; rather it specifically aims to protect and enhance the existing character of Kimbolton .As such this policy could help to provide mitigation against the potential of other NDP policies.
<b>Policy K11</b>	Protect local historic assets.  Enhancing local character and distinctiveness of Kimbolton.	No likely significant effect on the River Wye (including River Lugg) SAC.	N/A	This policy should help to mitigate the potential impacts of other NDP policies in relation to impact on historic	No. This policy will not lead to new development; rather it specifically aims to protect and enhance

This document is copyright of Herefordshire Council, please contact the Neighbourhood Planning team if you wish to reuse it in whole or part.

				character of townscape and landscape.	the existing character of Kimbolton .As such this policy could help to provide mitigation against the potential of other NDP policies.
<b>Policy K12</b>	Dark skies protection Reduction in light pollution	No likely significant effect on the River Wye (including River Lugg) SAC.	N/A	This policy should help to mitigate the potential impacts of other NDP policies in relation to increased traffic due to reducing the extent to which people need to travel for work.	No. This policy will not impact the river wye SAC, as it does not lead to development.
<b>Policy K13</b>	Increase in home working Broadband and communications improvement Reduced vehicle traffic	No likely significant effect on the River Wye (including River Lugg) SAC.	N/A	This policy should help to mitigate the potential impacts of other NDP policies in relation to increased traffic due to reducing the extent to which people need to travel for work.	No. This policy will also ensure communications infrastructure is strengthened for community use. Faster broadband speeds and better mobile reception may provide work from home opportunities, thereby reducing the need to travel.
<b>Policy K14</b>	Support renewable energy schemes that are in keeping with the character and landscape of Kimbolton.	No likely significant effect on the River Wye (including River Lugg) SAC.	N/A	The measures set out in other policies within the NDP will mitigate against any potential adverse impact.	No. The scale and extent of potential development is unlikely to have a significant impact on the SAC. There are sufficient policy safeguards within the NDP and Core Strategy to help avoid or mitigate any likely significant effects on

This document is copyright of Herefordshire Council, please contact the Neighbourhood Planning team if you wish to reuse it in whole or part.

					the SAC.
<b>Policy K15</b>	Promotion of traffic calming measures and road safety  Extra car parking provision	No likely significant effect on the River Wye (including River Lugg) SAC.	N/A	This policy should help to mitigate the potential impacts of other NDP policies in relation to increased traffic.	No. This policy plans to reduce speeds within Kimbolton and improve safety for all.
<b>Policy K16</b>	Promotion of traffic calming measures and road safety  Support safe access and off street parking that is permeable  Link footway and cycleway	No likely significant effect on the River Wye (including River Lugg) SAC.	N/A	This policy should help to mitigate the potential impacts of other NDP policies in relation to increased traffic.	No. This policy will not lead to development but support road safety, and support connectivity with Kimbolton.
<b>Policy K17</b>	Increase in home working  Promotion of appropriate scale tourism facilities  Small scale business production  Retaining existing employment sites  Support employment growth and infrastructure development	No likely significant effect on the River Wye (including River Lugg) SAC.	N/A	Good practice construction techniques include noise suppression measures; hours of operation may help to mitigate potential adverse effects during construction.	No. The scale and extent of potential development is unlikely to have a significant impact on the SAC. There are sufficient policy safeguards within the NDP and Core Strategy to help avoid or mitigate any likely significant effects on the SAC.
<b>Policy K18</b>	Protection of work premises  Reduced vehicle traffic  Retaining existing employment sites	No likely significant effect on the River Wye (including River Lugg) SAC.	N/A	N/A	No, this policy aims to protect existing employment sites. There are sufficient policy safeguards within the NDP and Core Strategy to help avoid or mitigate any likely significant effects on

This document is copyright of Herefordshire Council, please contact the Neighbourhood Planning team if you wish to reuse it in whole or part.

					the River Wye SAC.
<b>Policy K19</b>	<p>Support development for agricultural and forestry enterprises.</p> <p>Increase of vehicular movement and demand for water abstraction and treatment.</p> <p>Physical damage of disturbance on a localised scale.</p> <p>Non-physical disturbance such as noise.</p>	No likely significant effect on the River Wye (including River Lugg) SAC.	N/A	Improved water efficiency measures, metering and addressing leakages in the supply may help to mitigate any additional pressures on the water supply as a result of new development.	No, this policy aims to protect existing employment sites. There are sufficient policy safeguards within the NDP and Core Strategy to help avoid or mitigate any likely significant effects on the River Wye SAC.
<b>Policy K20</b>	<p>Support and upkeep of existing local community facilities.</p> <p>Promote new development of community facilities.</p> <p>Increase in vehicular movements.</p>	No likely significant effect on the River Wye (including River Lugg) SAC.	N/A	Improved water efficiency measures, metering and addressing leakages in the supply may help to mitigate any additional pressures on the water supply as a result of new development.	No, although this policy could result in the development of new community facilities or the loss of existing provision to new uses, which depending on location could have potential effect on the SAC. However, sufficient policy safeguards are in place within the Local Plan (Core Strategy) and with the inclusion of additional wording in the NDP policy to avoid or mitigate any likely significant effects on the River Wye.
<b>Policy K21</b>	<p>Facilities and where possible enhance them.</p> <p>Support and upkeep of existing</p>	No likely significant effect on the River Wye (including River Lugg)	N/A	n/a	No. This policy will not lead to new development; rather it

This document is copyright of Herefordshire Council, please contact the Neighbourhood Planning team if you wish to reuse it in whole or part.

	local community facilities.	SAC.			specifically aims to protect community facilities.
<b>Policy K22</b>	Safeguard of Local Green spaces. Increase in recreation activities use. Increase in outdoor activities.	No likely significant effect on the River Wye (including River Lugg) SAC.	N/A	None. This policy can act as a mitigation measure to ensure greenspace is safeguarded against inappropriate development.	No. This policy will not lead to new development; rather it specifically aims to protect and promote open spaces.

# Appendix 3

---

**Initial Habitat Regulations Assessment and Strategic Environmental  
Assessment Screening Notification**

**The Neighbourhood Planning (General) (Amendment) Regulations  
2015 (Reg. 32)**

**Conservation of Habitats and Species Regulations 2010 (d)**

---

<b>Neighbourhood Area:</b>	Kimbolton Neighbourhood Area
<b>Parish Council:</b>	Kimbolton Parish Council
<b>Neighbourhood Area Designation Date:</b>	07/07/2015

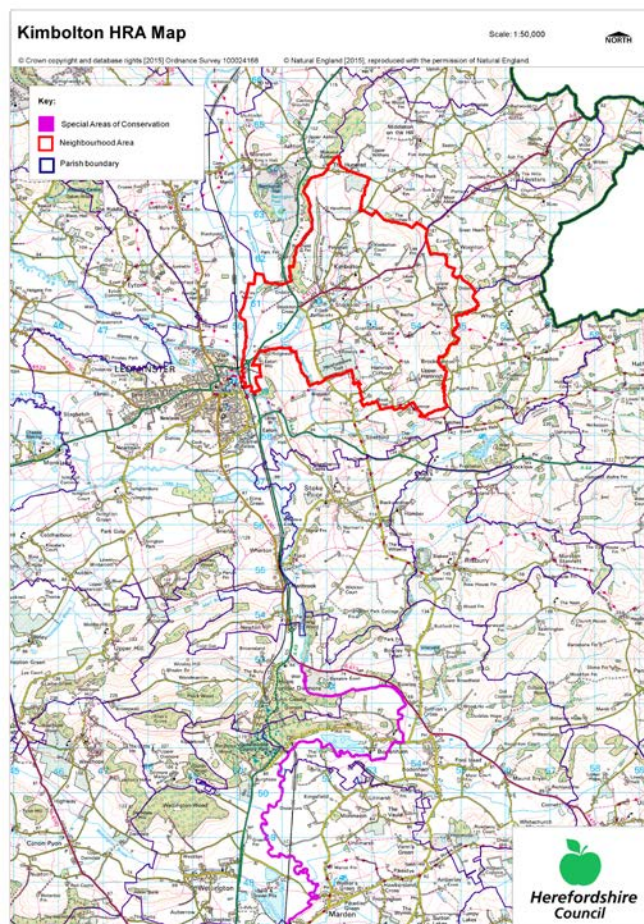
**Introduction**

This Initial Habitat Regulations Assessment (HRA) and Strategic Environmental Assessment (SEA) Screening has been undertaken to assess whether any European sites exist within or in proximity to the Neighbourhood Area which could be affected by any future proposals or policies.

Through continual engagement the outcomes of any required assessments will help to ensure that proposed developments will not lead to Likely Significant Effects upon a European site or cause adverse impacts upon other environmental assets, such as the built historic or local natural environment.

## HRA Initial Screening

Map showing relationship of Neighbourhood Area with European Sites (not to scale)



### River Wye (including the River Lugg) Special Area of Conservation (SAC):

Does the Neighbourhood Area have the River Wye (including the River Lugg) in or next to its boundary?	N	The River Wye/Lugg SAC is 6.3km away from the Parish
Is the Neighbourhood Area in the hydrological catchment of the River Wye (including the River Lugg) SAC?	Y	The Parish is within the hydrological catchment of the River Lugg.
If yes above, does the Neighbourhood Area have mains drainage to deal with foul sewage?	N	There is no mains drainage at Kimbolton.

### Downton Gorge SAC:

Is the Neighbourhood Area within 10km of Downton Gorge SAC?	N	Downton Gorge is 12.5km away from the Parish.
---	---	---

**River Clun SAC:**

Does the River Clun border the Neighbourhood Area	N	River Clun does not border the parish.
---	---	--

**Wye Valley & Forest of Dean Bat Sites SAC:**

Is the Neighbourhood Area within 10km of any of the individual sites that make up the Wye Valley & Forest of Dean Bat Sites?	N	Wye Valley and Forest of Dean Bat Sites are 40km away from the Parish.
--	---	--

**Wye Valley Woodlands SAC:**

Is the Neighbourhood Area within 10km of any of the individual sites that make up the Wye Valley Woodlands Site?	N	Wye Valley Woodlands are 42.9km away from the Parish.
--	---	---

**HRA Conclusion:**

The assessment above highlights that European Sites will need to be taken into account in the future Neighbourhood Development Plan for the Kimbolton Neighbourhood Area and a Full HRA Screening will be required.

**European Site**

*(List only those which are relevant from above)*

River Wye (including the River Lugg) SAC

## Strategic Environmental Assessment Initial Screening for nature conservation landscape and heritage features

The following environmental features are within or in general proximity to the Kimbolton Neighbourhood Area and would need to be taken into account within a Strategic Environmental Assessment. In addition, the NDP will also need to consider the other SEA topics set out in Guidance Note 9a to ensure that the plan does not cause adverse impacts.

SEA features	Within Neighbourhood Area		Bordering Neighbourhood Area	
	Total number	Name(s)	Total number	Name(s)
Ancient Woodland	1	Long Wood 1.	7	Long Wood 2; Woonton Wood; Yells Wood; Nurton Park; Park Wood; Pudleston Dingle; Pudleston Wood.
Areas of Outstanding Natural Beauty (AONB)	0	-	0	-
Conservation Areas	1	Leominster River Meadows.	3	Leominster; Leominster Bargates; Leominster Bridge Street.
Flood Areas	Flood Zones 2 and 3 follow the River Lugg, Cogwell Brook and Cheaton Brook.			
Geoparks	0	-	0	-
Listed Buildings	There are numerous Listed Buildings within the Neighbourhood Area.			
Mineral Reserves	2	Area around Wellington constrained by 200m zone and area north of Wellington outside 200m zone; East of Leominster, Tick Bridge Lane, north of Stretford Brook.	5	Sparrow Hill, north of Steens Bridge; East of Stoke Prior, Blackwardine; Worcester Road from Leominster; South east of Pudleston Court; Newlands to Highfield House off Passa Lane.
National Nature Reserve (NNR)	0	-	0	-

Nature Trails	2	Herefordshire Trail; Three Rivers Ride.	0	-
Regionally Important Geological Sites (RIGS)	0	-	0	-
Registered Parks and Gardens	0	-	1	Berrington Hall
Scheduled Ancient Monuments (SAM)	2	Bach Camp; Dovecote at Stockton Bury.	3	Earthworks SE of Lower Ashton Farm; Leominster Priory; Forbury Chapel;
Sites of Importance in Nature Conservation (SINCs)	0	-	0	-
Special Areas of Conservation (SAC)	0	-	0	-
Special Wildlife Sites (SWS)	10	Long Wood & Stockton Ride; Land near Grove Farm; Land at Woonton Court, Woonton; Land near Lever Hill; Land near Southley; Land near Lower Bach; Cheaton, Swingley and Rolls Brooks; Land near Bach Camp (2) Bach Camp; River Lugg.	14	The Brooches and adjoining woodland; Berrington Park; Fields east of Blackpole; Land near Lower Whyte; Starch Field Covert; Land at Upper Whyte Farm; Land near the Lower House; Pool at Pudlestone; Land at Leasowes; Land at Eaton; Land at Eaton Hill; Fields near Stoke Prior; Land at Stoke Prior (2); Marshland near Steens Bridge.
Unregistered parks and gardens	3	Eaton Hall; Hamnish Clifford; Hennor House.	8	Pudlestone Court; Pudlestone Rectory; Hatfield Court; Eye Manor; Eyton Hall; Eyton Old Hall; The Ryelands;

					Buckland.
			<b>SSSI Status</b>		<b>SSSI Status</b>
Sites of Special Scientific Interest (SSSI)	1	River Lugg.	Unfavourable Recovering.	1	Berrington Pool. Favourable.

**Decision Notification:**

The initial screening highlights that the Neighbourhood Development Plan for the Kimbolton Neighbourhood Area:

- a) Will require further environmental assessment for Habitat Regulations Assessment and Strategic Environmental Assessment.

**Assessment date: 08/06/2015**

**Assessed by: James Latham**

## Appendix 1: European Sites

The table below provides the name of each European Site, which has been screened in for the purposes of neighbourhood planning in Herefordshire; includes their site features of integrity; and vulnerability data. This is based on the sites individual features of integrity and their vulnerabilities, which could include distance criteria. This has been used in identifying which parishes are likely to require a full HRA Screening of their future Neighbourhood Development Plan, to establish if their plan might have Likely Significant Effects on a European Site.

<b>Downton Gorge</b>
<b>Site Features:</b> <i>Tilio-Acerion</i> forests of slopes, screes and ravines
<b>Vulnerability data:</b> 10km for air quality associated with poultry units or other intensive agricultural practices.

<b>River Clun</b>
<b>Site Features:</b> Freshwater pearl mussel <i>Margaritifera margaritifera</i>
<b>Vulnerability data:</b> Water quality is important to maintain the site feature. Parishes either side of the River Clun will be affected.

<b>River Wye</b>
<b>Site Features:</b> Water courses of plain to montane levels with the <i>Ranunculion fluitantis</i> and <i>Callitricho-Batrachion</i> vegetation. Transition mires and quaking bogs. White-clawed (or Atlantic Stream) crayfish <i>Austropotamobius pallipes</i> . Sea lamprey <i>Petromyzon marinus</i> . Brook lamprey <i>Lampetra planeri</i> . River lamprey <i>Lampetra fluviatilis</i> . Twaite shad <i>Alosa fallax</i> . Atlantic salmon <i>Salmo salar</i> . Bullhead <i>Cottus gobio</i> . Otter <i>Lutra lutra</i> . Allis shad <i>Alosa alosa</i>
<p><b>Vulnerability data:</b> Proximity: Developments should not be within 100m of the designated bank. Some developments beyond 100m may also have impacts based on proximity and these issues should be addressed where possible when developing NDP policy and choosing site allocations.</p> <p>Water Quality: Within the whole catchment of the River Wye, which includes the River Lugg, mains drainage issues with regards to water quality are being resolved through the Core Strategy / Local Plan and development of a Nutrient Management Plan. Welsh Water should be consulted to ensure that the proposed growth will be within the limit of their consents.</p> <p>Otters: “An otter will occupy a ‘home range’, which on fresh waters usually includes a stretch of river as well as associated tributary streams, ditches, ponds, lakes and woodland. The size of a home range depends largely on the availability of food and shelter, and the presence of neighbouring otters. On rivers, a male’s home range may be up to 40km or more of watercourse and associated areas; females have smaller ranges (roughly half the size) and favour quieter locations for breeding, such as tributary streams.</p> <p>Otters without an established home range are known as ‘transients’. They are mostly juveniles looking for a territory of their own, or adults that have been pushed out of their territories. Transient otters may use an area for a short while, but they will move on if conditions are not suitable or if they are driven away by resident otters. Transients will have been important in extending the range of otters, but they are very difficult to identify from field signs.</p> <p>Within a home range an otter may use many resting sites. These include above-ground shelters, such as stands of scrub or areas of rank grass, and underground ‘holts’ – for example, cavities under tree roots and dry drainage pipes.”</p>

<b>Wye Valley and Forest of Dean Bat Sites</b>
<b>Site Features:</b> Annex II species that are a primary reason for site selection: Lesser horseshoe bat <i>Rhinolophus hipposideros</i> . Greater horseshoe bat <i>Rhinolophus ferrumequinum</i>
<p><b>Vulnerability data:</b> Lesser Horseshoe bats are known to migrate between 5km and 10km between their summer and winter roosts. The Lesser Horseshoe Bat is vulnerable to disturbance; light pollution; and habitat loss. Check with the planning ecologist for other issues.</p> <p>Greater Horseshoe bats are known to migrate between 20-30km between their summer and winter roosts.</p> <p>NDPs closest to the European Site will need to consider: Woodland habitat buffer.</p> <p>Lesser Horseshoe Bat: Old buildings; woodland locations; sheltered valleys, extensive deciduous woods or dense scrub, close to roost sites. In areas of fragmented habitats, linear habitats such as hedgerows are important corridors. Vulnerable to loss or disturbance of both summer and winter roosts and removal of linear habitat.</p> <p>Greater Horseshoe Bat: Large buildings, pasture, edge of mixed deciduous woodland and hedgerows. Mixed land-use especially south-facing slopes, favours beetles, moths and insects they feed on. During the winter they depend on caves, abandoned mines and other underground sites for undisturbed hibernation. A system/series of sites required. Vulnerable to loss of insect food supply, due to insecticide use, changing farming practices and loss of broad-leaved tree-cover and loss / disturbance of underground roosts sites.</p>
<b>Wye Valley Woodlands</b>
<b>Site Features:</b> Annex I habitats that are a primary reason for site selection: Beech forests <i>Asperulo-Fagetum</i> , <i>Tilio-Acerion</i> forests of slopes, screes and ravines, <i>Taxus baccata</i> woods of the British Isles. Annex II species present as a qualifying feature, but not a primary reason for site selection: Lesser horseshoe bat <i>Rhinolophus hipposideros</i> , 51-100 residents
<b>Vulnerability data:</b> Lesser Horseshoe bats are known to migrate between 5km and 10km between their summer and winter roosts. The Lesser Horseshoe Bat is vulnerable to disturbance; light pollution; and habitat loss. Check with the planning ecologist for other issues. NDPs closest to the European Site will need to consider: Woodland habitat buffer. Lesser Horseshoe Bat: Old buildings; woodland locations; sheltered valleys, extensive deciduous woods or dense scrub, close to roost sites. In areas of fragmented habitats, linear habitats such as hedgerows are important corridors. Vulnerable to loss or disturbance of both summer and winter roosts and removal of linear habitat.